



# Mining and Exploring for Nickel

## Diggers and Dealers

Kalgoorlie, Western Australia, August 2015

# Important notice disclaimer



This presentation ("**Presentation**") has been prepared by Mincor Resources NL ("**MCR**") based on information available to it from its own and third party sources and is not a disclosure document.

By retaining this Presentation, you (the Recipient) acknowledge and represent to MCR that you have read, understood and accept the terms of this Important Notice. If you do not accept these terms, you should immediately destroy or delete this Presentation.

This Presentation does not purport to contain all the information that a prospective investor may require in connection with any potential investment in MCR or its underlying business. Each Recipient must make its own independent assessment of MCR before acquiring any securities in MCR ("**Securities**"). You should not treat the contents of this Presentation, or any information provided in connection with it, as financial advice, financial product advice or advice relating to legal, taxation or investment matters. Before acquiring any Securities, you should consult your own advisers and conduct your own investigation and analysis in relation to MCR.

No representation or warranty is made by MCR or any of its advisers, agents or employees as to the accuracy, completeness or reasonableness of the information in this Presentation or provided in connection with it. No information contained in this Presentation or any other written or oral communication in connection with it is, or shall be relied upon as, a promise or representation and no representation or warranty is made as to the accuracy or attainability of any estimates, forecasts or projections set out in this Presentation. No liability will attach to MCR or its advisers with respect to any such information, estimates, forecasts or projections.

MCR does not accept responsibility or liability for any loss or damage suffered or incurred by you or any other person or entity however caused (including, without limitation, negligence) relating in any way to this Presentation including, without limitation, the information contained in or provided in connection with it, any errors or omissions from it however caused (including without limitation, where caused by third parties), lack of accuracy, completeness, currency or reliability or you, or any other person or entity, placing any reliance on this Presentation, its accuracy, completeness, currency or reliability.

MCR does not accept any responsibility to inform you or any matter arising or coming to MCR's notice after the date of this Presentation which may affect any matter referred to in this Presentation.

Any liability of MCR, its advisers, agents and employees to you or to any other person or entity arising out of this Presentation including pursuant to the Australian Securities and Investments Commission Act, 2001, Corporations Act 2001 and the Trade Practices Act 1974 or any other applicable law is, to the maximum extent permitted by law, expressly disclaimed and excluded.

The distribution of this Presentation may be restricted by law in certain jurisdictions. Recipients, and any other persons who come into possession of this Presentation must inform themselves about, and observe any such restrictions.

## **Future Matters**

This Presentation contains reference to certain intentions, expectations, future plans, strategy and prospects of MCR. Those intentions, expectations, future plans, strategy and prospects may or may not be achieved. They are based on certain assumptions, which may not be met or on which views may differ and may be affected by known and unknown risks. The performance and operations of MCR may be influenced by a number of factors, many of which are outside the control of MCR. No representation or warranty, express or implied, is made by MCR or any of its directors, officers, employees, advisers or agents that any intentions, expectations or plans will be achieved either totally or partially or that any particular rate of return will be achieved.

Given the risks and uncertainties that may cause MCR's actual future results, performance or achievements to be materially different from those expected, planned or intended, Recipients should not place undue reliance on these intentions, expectations, future plans, strategy and prospects. MCR does not warrant or represent that the actual results, performance or achievements will be as expected, planned or intended.

# Mincor Resources NL



## Overview

- Kambalda nickel miner and explorer
- Dominant land position in Kambalda
- Mined to date: >179Kt Ni in Ore
- Discovered to date: ~100Kt Ni in Reserve
- Market cap: ~\$77M; 188.2M shares out
- Cash at 30 June 2015: \$34M

## Performance to date

- 14 years of successful nickel mining
- Once-only equity raising: \$5M in 2001
- Profits to date: \$212 million
- Dividends paid to date: \$133 million





# Highlights of FY2015



- Continued **core focus on safety**
- **Production exceeds target:** 306,964 tonnes @ 2.79% Ni for 8,632 tonnes Ni-in-Ore
- Cash Costs above target at **A\$5.93/lb payable Ni** – lower grades in second half
- **Revised mining strategy** implemented:
  - Tailor production to suit conditions
  - Prepare the growth projects for development
- **Outstanding exploration results**
- **Enviably pipeline of organic growth opportunities**







# Kambalda Operations



# Mincor in Kambalda

- An outstanding asset base:
  - **Two** operating mines
  - **Four** new growth projects
  - **Dominant** landholding position – innumerable exploration targets
- Uniquely flexible operating model
- Unsurpassed leverage to the nickel price
- Skilled workforce, strong and stable management team
- Proven long-term track record
- Strong balance sheet



# Strategy: Restructuring for Growth



- **Tailor** production to suit conditions
- **Optimise** cashflows – protect margins not volumes
- **Mine** the developed stopes in Miitel and Mariners – unified management and crew
- Optionality to **suspend or ramp-up** production
- **Retain** undeveloped reserves in Miitel to fund re-start of capital development
- **Complete** feasibility studies on growth projects



**Lift production into a rising nickel price, from an expanded reserve base and at a re-set cost level**



# The Road Ahead



Manage through down-turn with optimised mining plan

Re-start capital development at Miitel/Burnett

Complete Durkin North feasibility study by Christmas

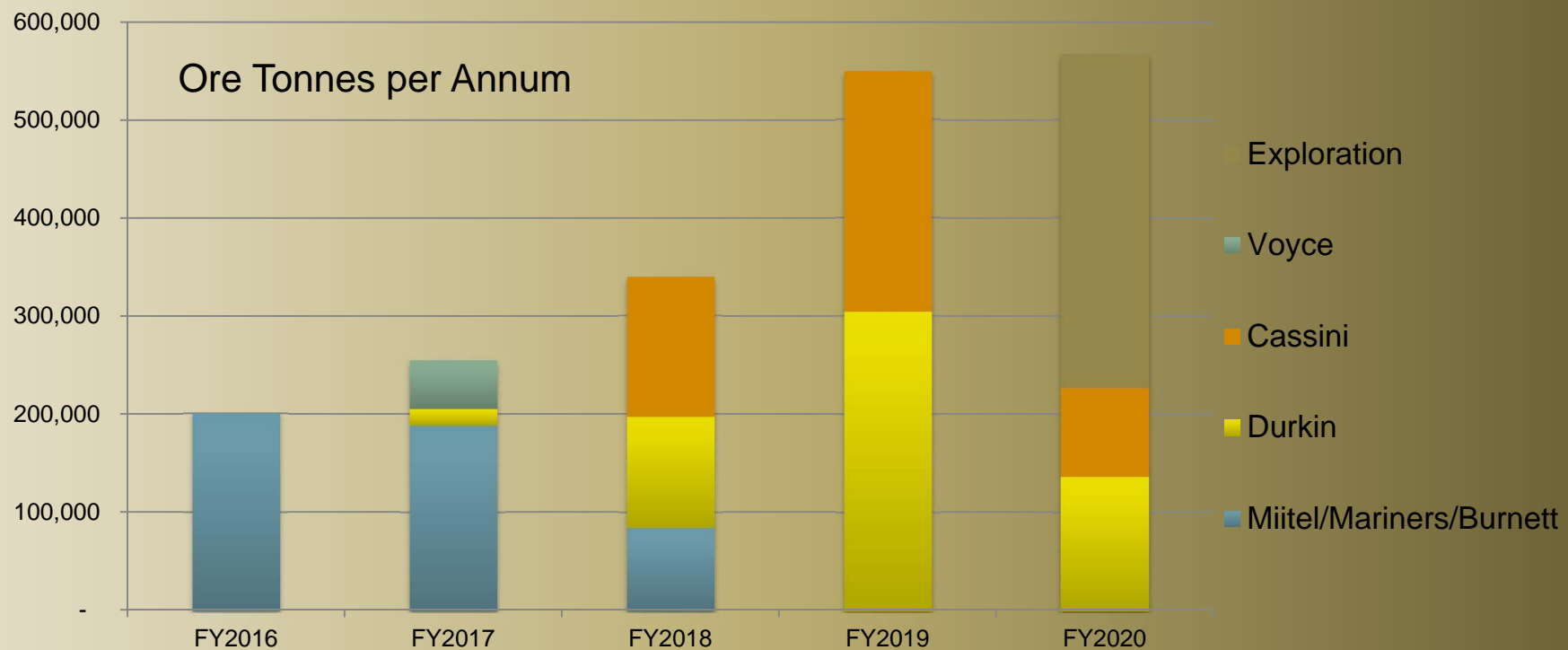
Start Durkin North development early 2016

Complete Cassini Feasibility study by July 2016

Start Cassini development first Quarter FY2017

Actions and timelines subject to feasibility study results and the nickel price

# Conceptual Production Schedule 2015-20



Miitel/Mariners: based on mining reserves

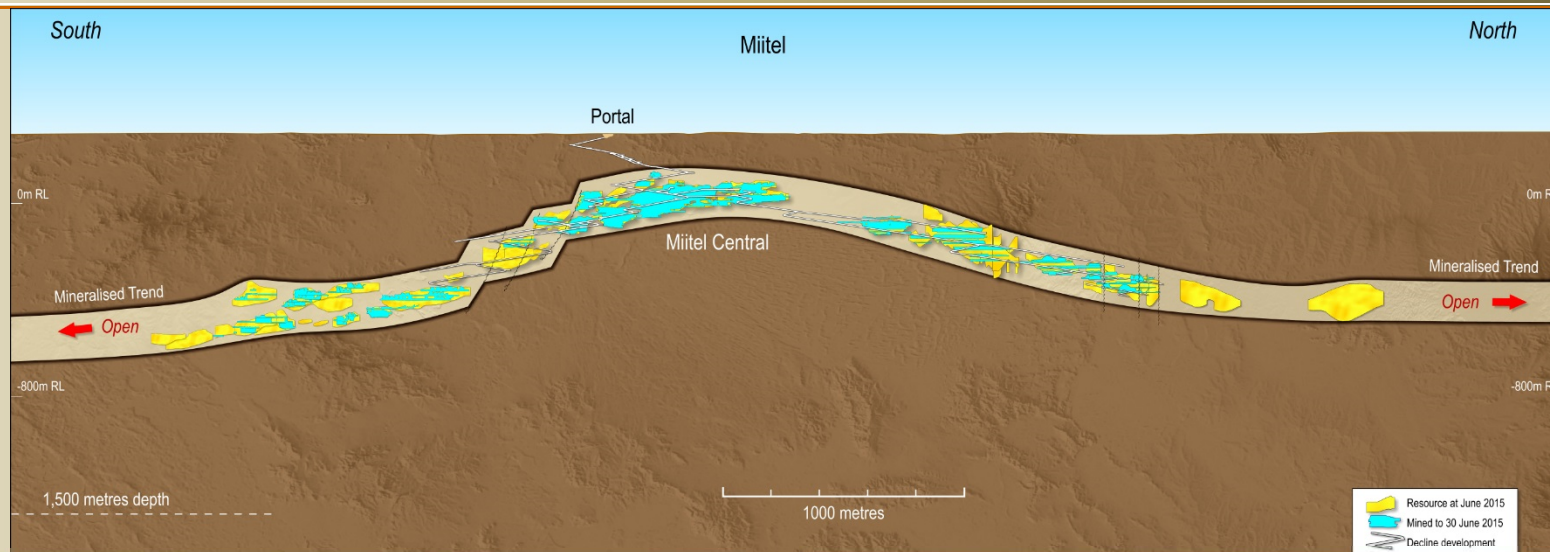
Burnett/Durkin/Voyce: based on scoping studies of existing mineral resources

Cassini: based on scoping study of existing 'exploration target'

Exploration: based on historical exploration performance

This production profile is conceptual and subject to the results of feasibility studies (and further drilling at Cassini). It assumes forecast nickel prices. There is no guarantee that these mine developments will take place.

# Miitel Nickel Mine



## Miitel Production to Date

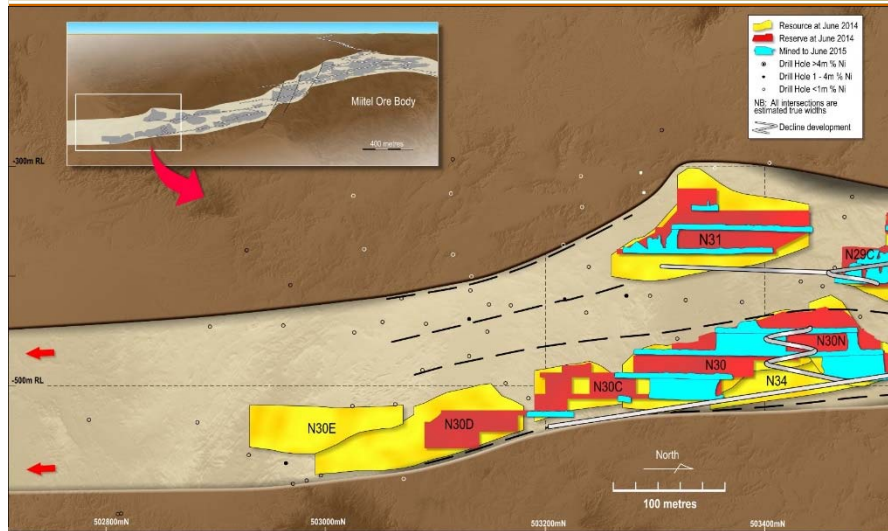
- 2,469,800t @ 2.91% Ni for 72,000t Ni
- Ore system over 5km in strike
- Open to north and south – outstanding exploration potential

## Miitel Future Production

- Integration of South Miitel and Burnett generates strong production scheduling options – studies underway

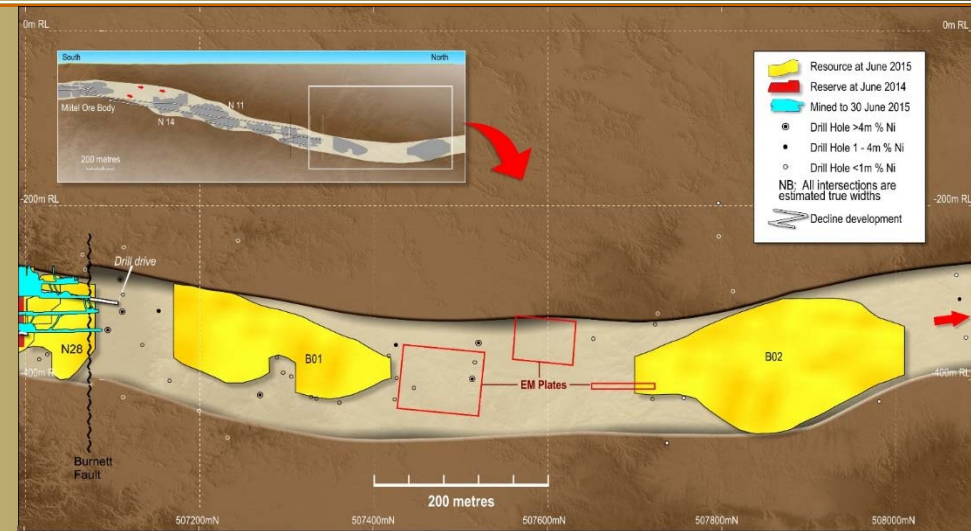


# South Miitel & Burnett: Compelling Opportunity



## South Miitel

- Mining of developed stopes underway
- N30C and N30D ore bodies untouched – available to fund capital re-start



## Burnett (North Miitel)

- Big resource upgrade achieved in FY15
- Total resource lifted to **241,000 @ 4% Ni** for **9,700t** nickel

**Compelling** combined production schedule achievable

# Mariners Nickel Mine

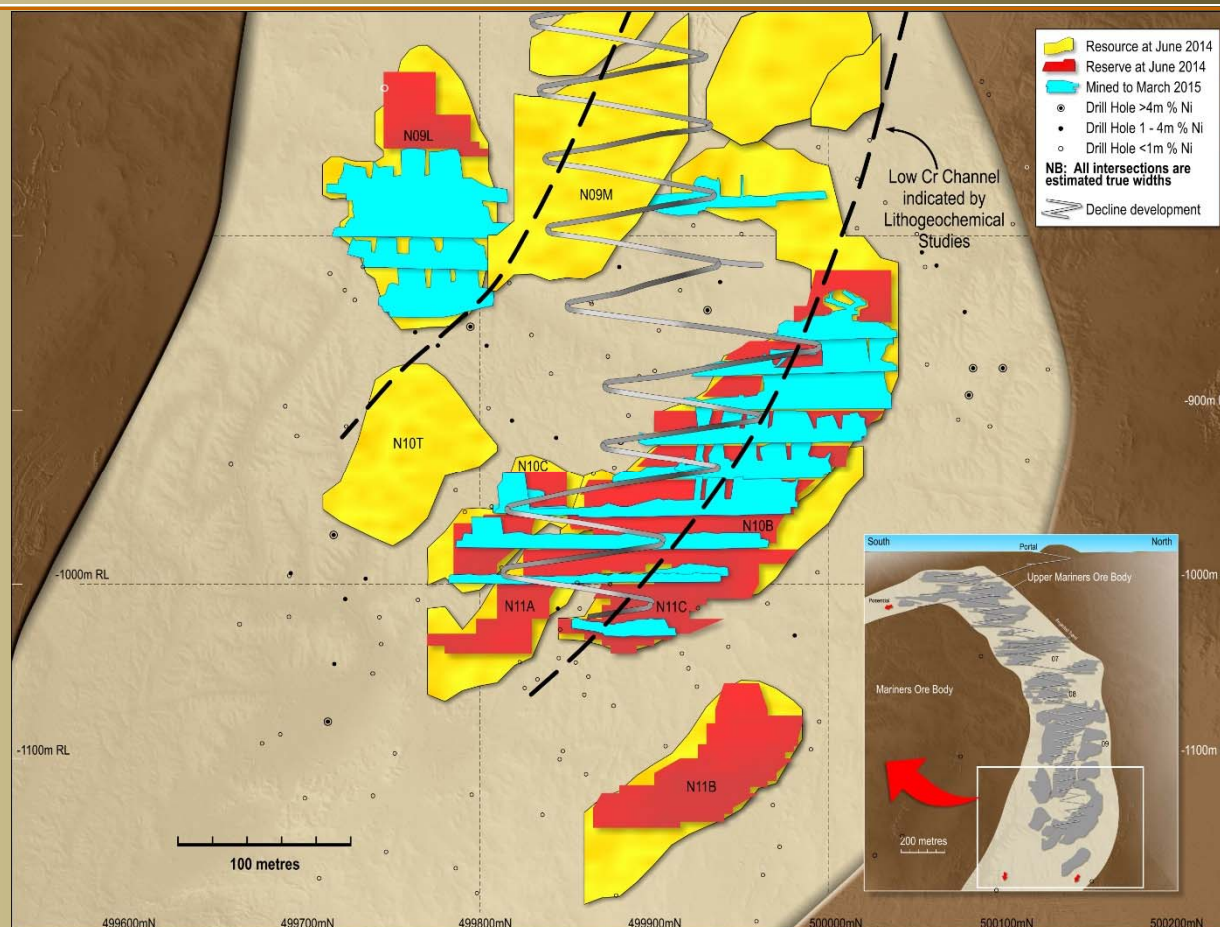


## Production to Date

- 2,558,800t @ 2.7% Ni for 68,823t Ni
- Strong exploration potential down-plunge to south

## Mariners Future Production

- N10B fully developed
- Mining of high-grade stopes underway
- N11B remains untouched – requires capital development for access.





# Kambalda Growth Projects





# Mincor's Emerging Growth Opportunities



- **Durkin North:** Drilling during FY15 has upgraded the Durkin North resource – potential development as Mincor's next mine
- **Burnett:** Drilling during FY15 has upgraded the Burnett resource – compelling production schedule combined with South Miitel
- **Voyce:** Newly discovered high-grade resource – potential as a satellite operation to Mariners.
- **Cassini:** Major new discovery – continued success could see Cassini developed as Mincor's fourth mine

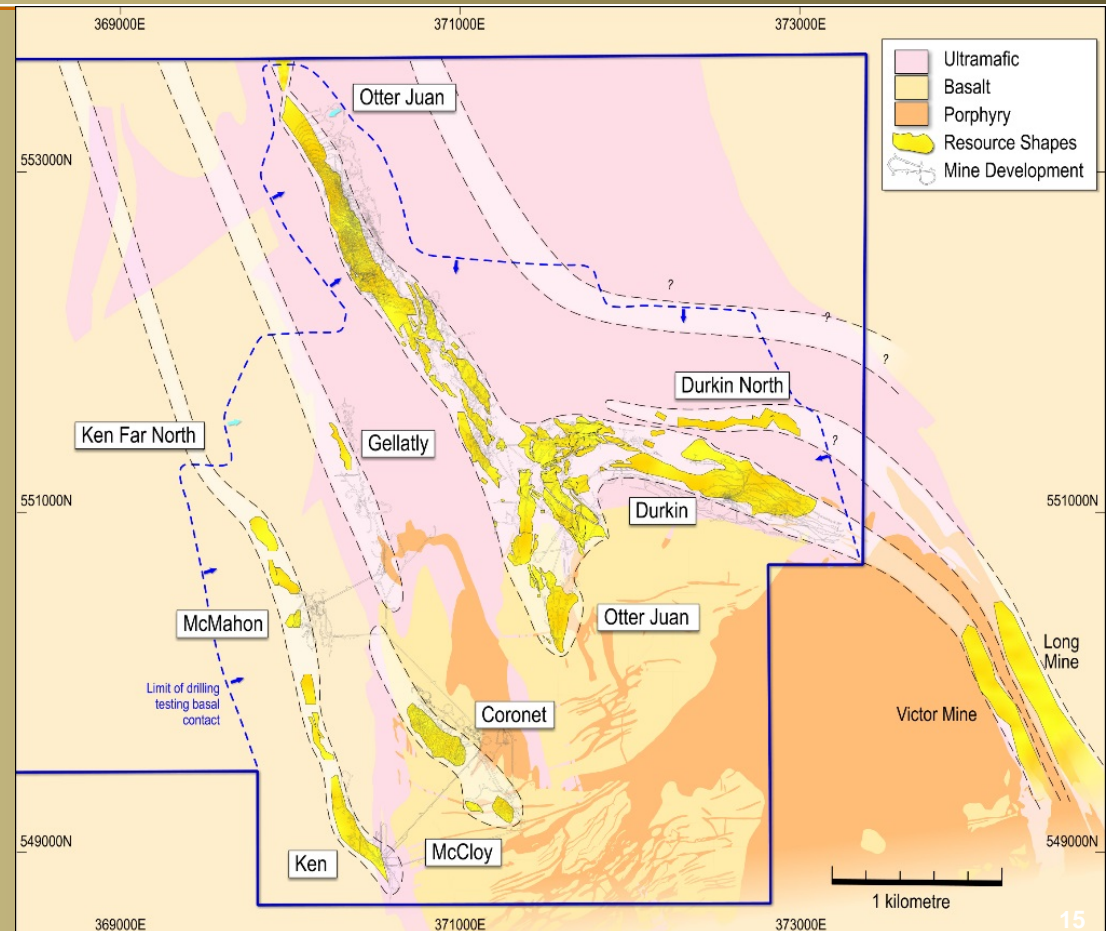
**Note:** all potential mine developments mentioned above are subject to continued drilling success and the completion of full feasibility studies.



# Durkin North – A Gem Among Giants



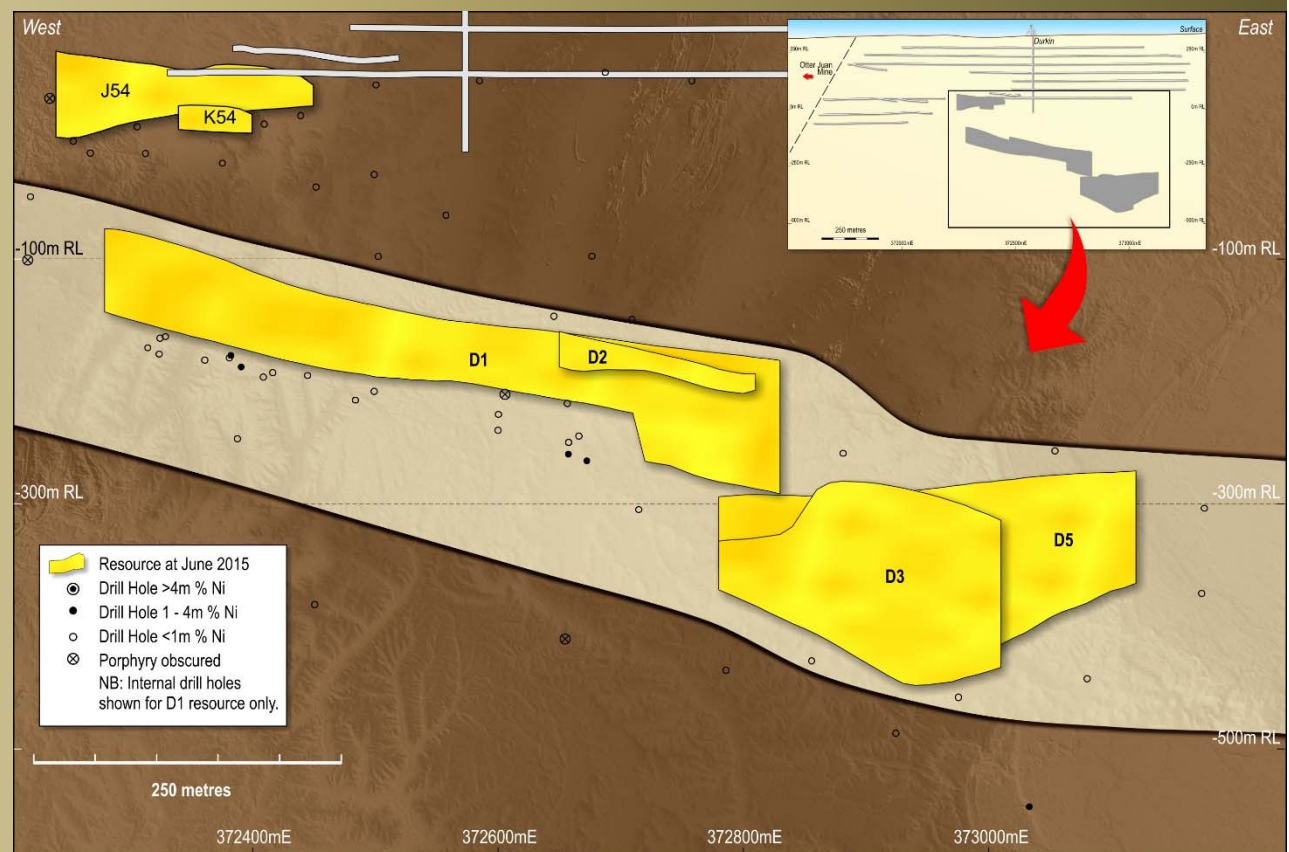
- Mincor's North Kambalda tenement – phenomenal nickel endowment
- Nearly half of the Kambalda District's total production
- Very high prospectivity for large, high-grade nickel deposits
- Durkin North is interpreted to be the extension of the Long System – past production of over 200,000 tonnes nickel



# Durkin North – A Gem among Giants



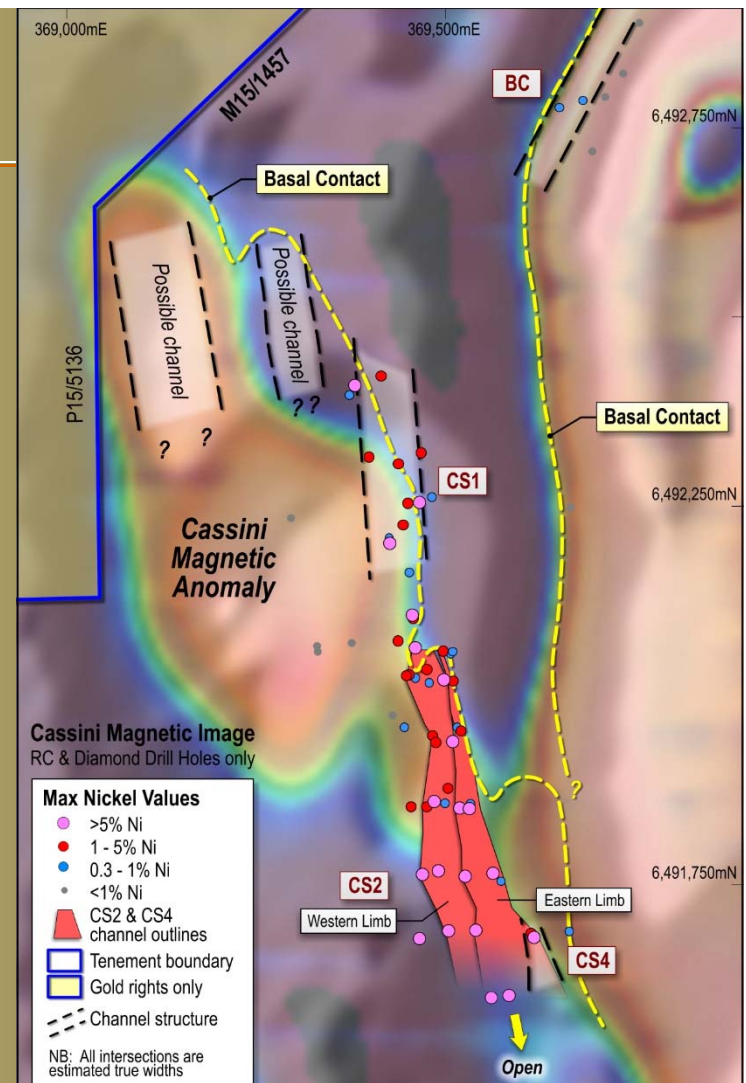
- Highly successful FY15 drilling has upgraded the Durkin Mineral Resource
- D1/D2 Resources increased by 46% - disproportionately positive impact on economic value
- New Mineral Resource: **427,000 tonnes @ 5.2% Ni** for 22,400 tonnes nickel
- **Very High potential** for significant additional discoveries
- **Feasibility study due for completion by Christmas**



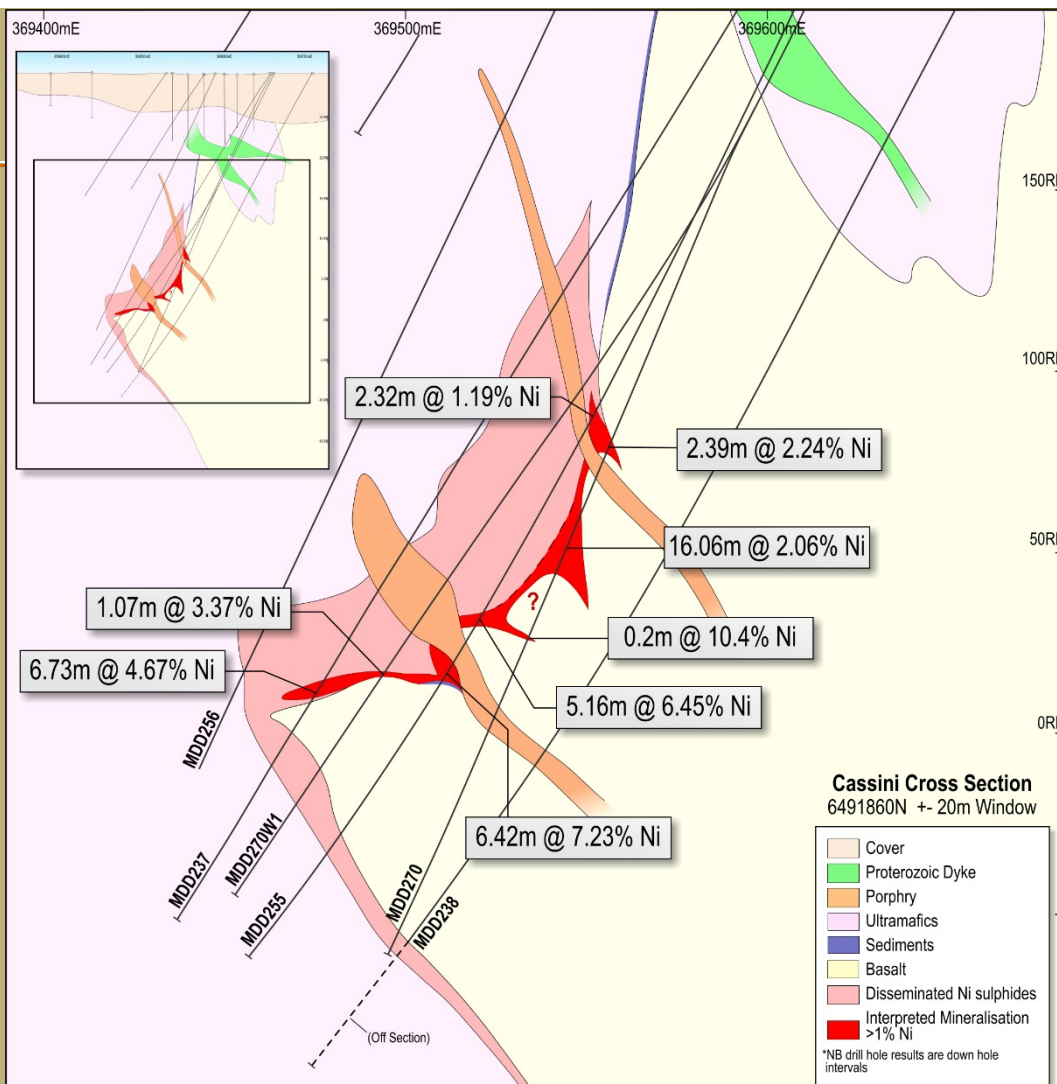
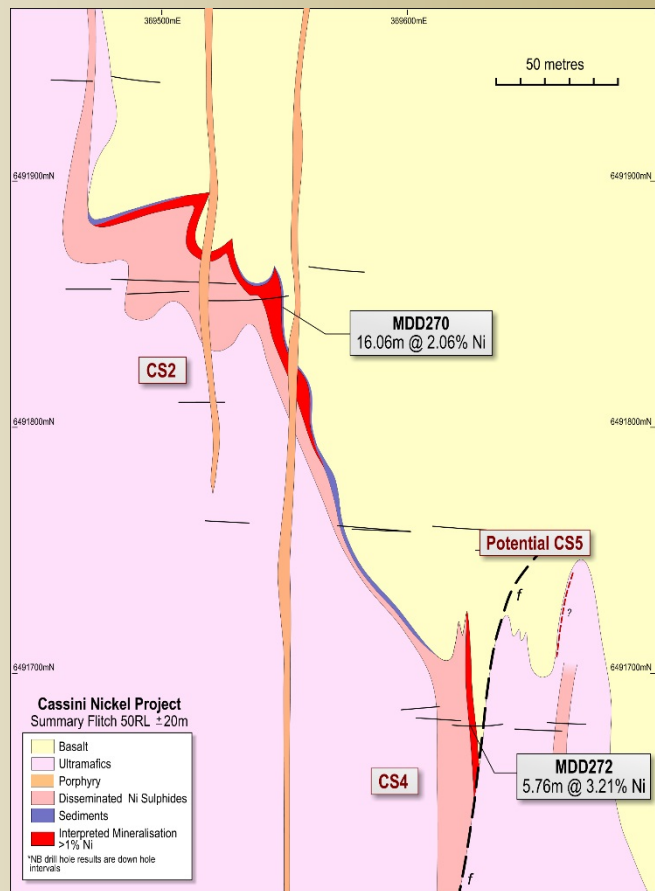


# Cassini Nickel Prospect

- Major new greenfields discovery
- Mineralisation starts near surface
- Two parallel channel structures discovered so far
- **District-scale potential** – northern half of magnetic anomaly **unexplored**
- Consistent, high-grade intersections in CS2 channel
- Mineralisation intersected over a plunge-length of 430 metres
- 9km from Mariners Mine, granted Mining Lease
- Does not fall under any existing Offtake Agreement

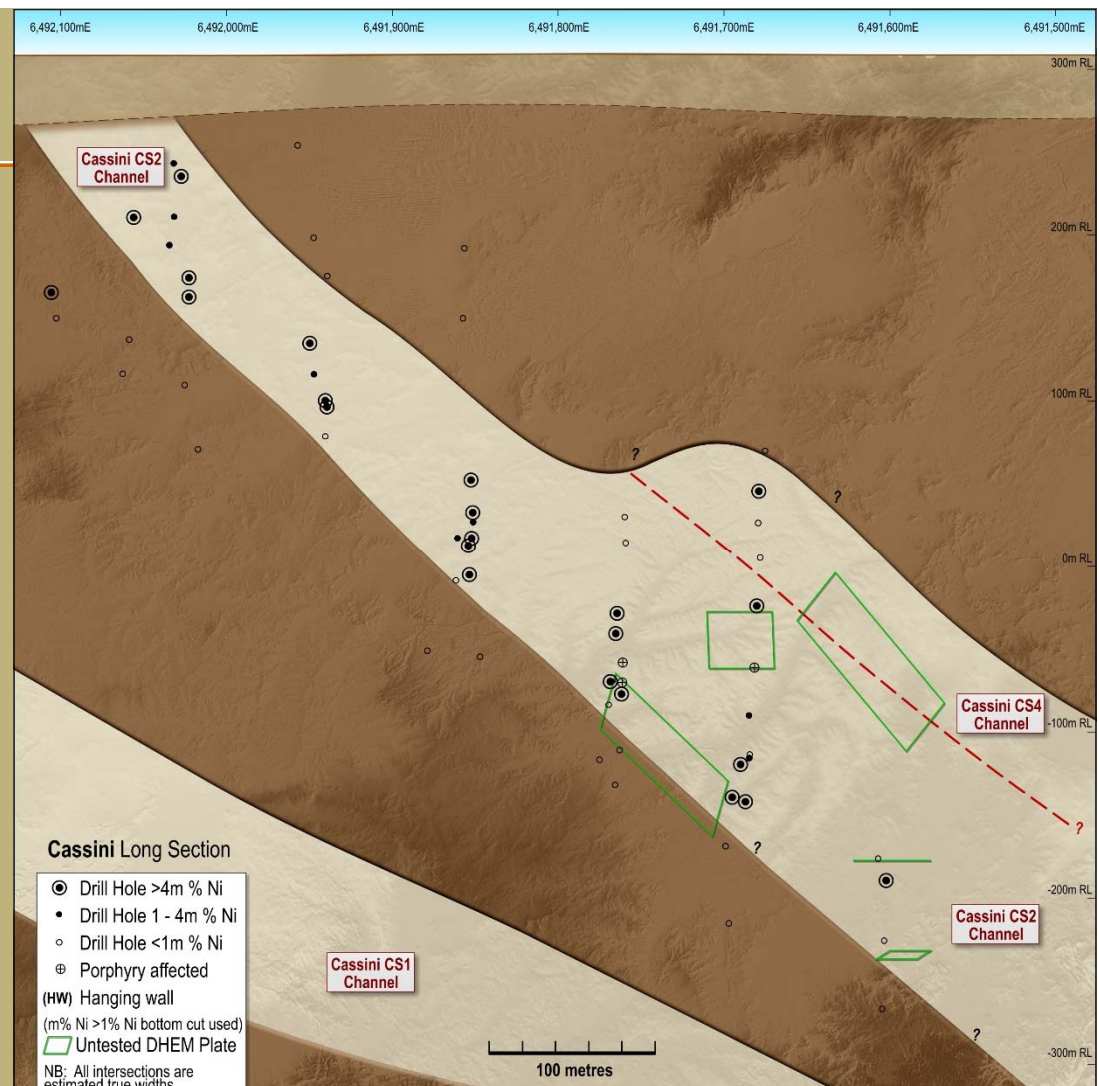


# Cassini Cross and Long Sections



# Cassini Long Section

- “Exploration Target” defined:  
**400,000 to 500,000 tonnes at 3-4% Ni**
- This target covers only the 430 metre plunge length drilled so far
- Very high additional prospectivity down-plunge and along strike
- Conceptual scoping study demonstrates low start-up capex
- Utilisation of nearby Redross Mine surface infrastructure
- Strong potential economic returns at forecast nickel prices

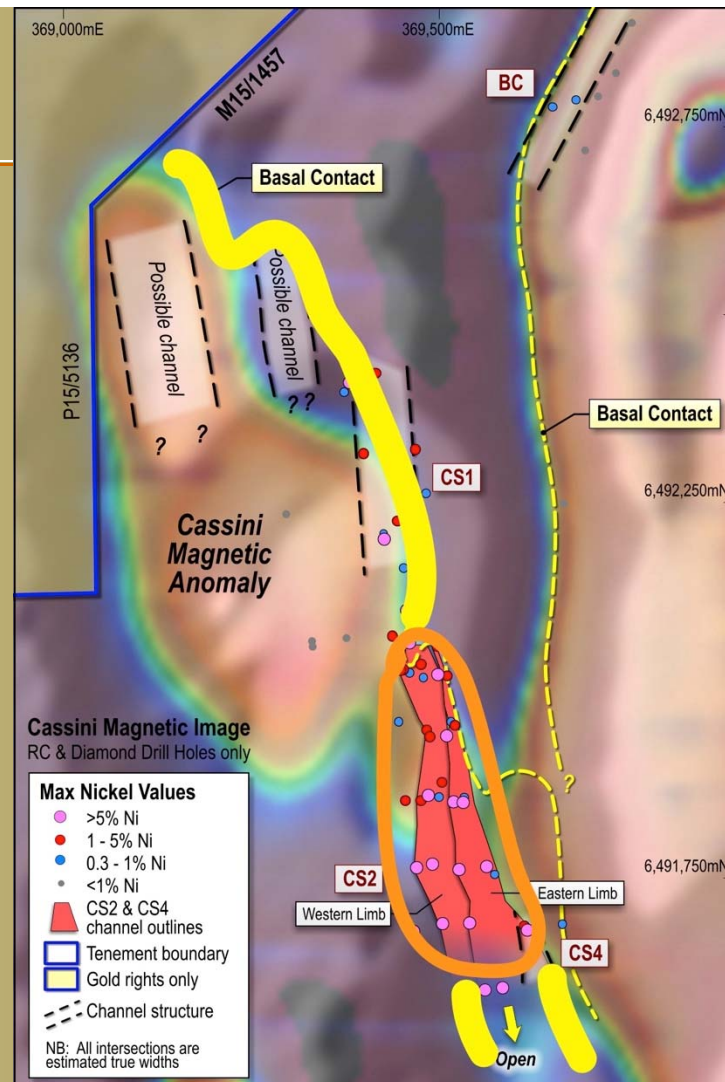




# Cassini Untouched Upside

Next phases of drilling:

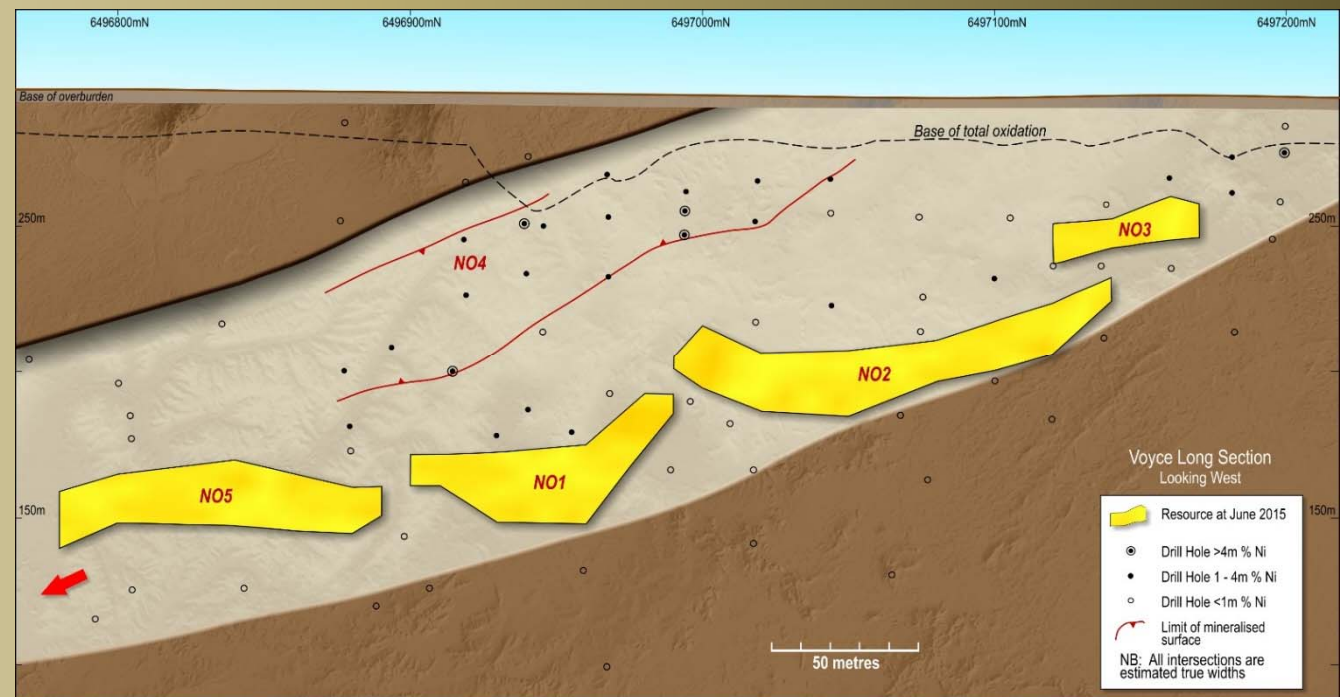
- Infill drilling of Exploration Target to Indicated Resource level
- Down-plunge extensional drilling
- Along strike exploration drilling:
  - Aircore to pin down basal contact
  - RC and Diamond to test targets



# Voyce – High-Grade Discovery

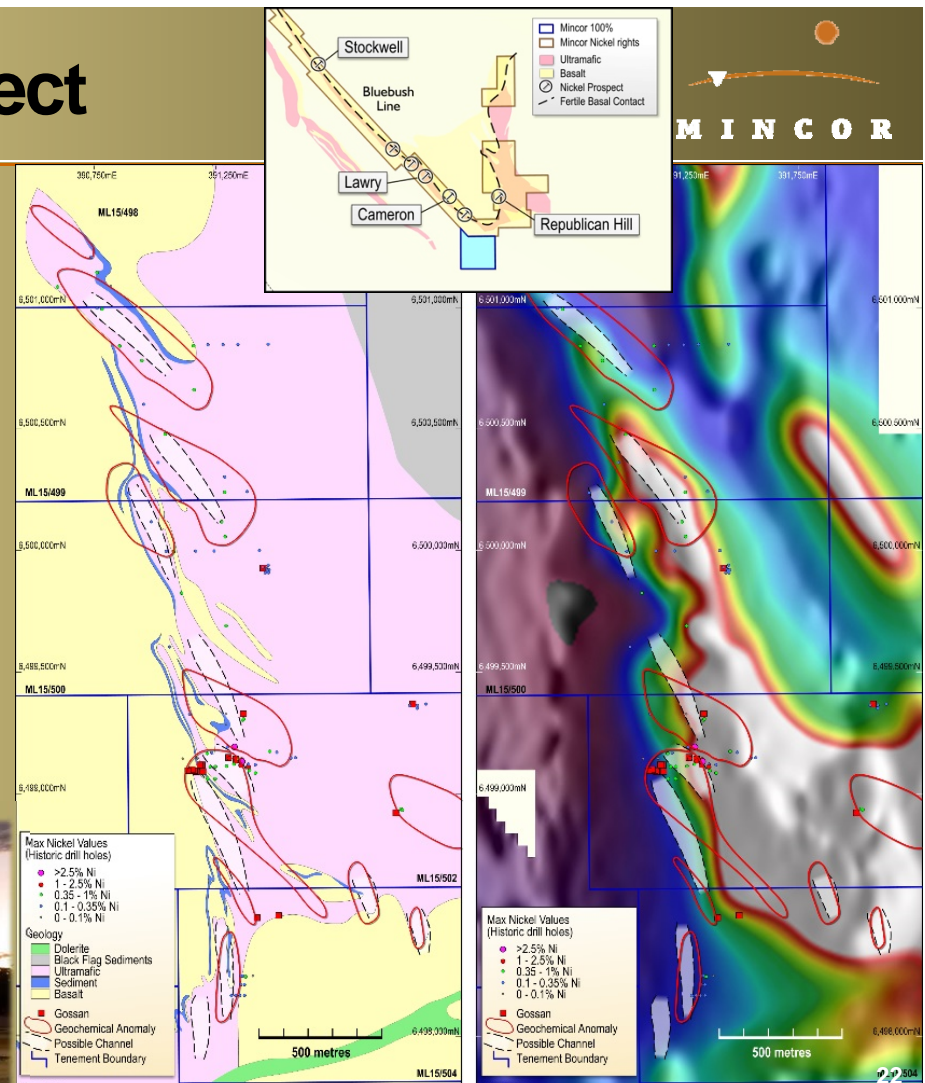


- High-grade, near-surface discovery
- Maiden Mineral Resource: **64,000 tonnes @ 5.2% Ni for 3,400t nickel**
- Channel structure open at depth
- Granted Mining Lease
- 2.5km south of Mariners Mine, on the Mariners haulage road
- Existing Offtake with BHP Billiton



# Republican Hill Nickel Prospect

- Exciting new exploration target
- Cassini look-alike
- Striking coincidence of:
  - Nickel in soils
  - Interpreted channel locations in basal contact
  - Magnetic high along basal contact



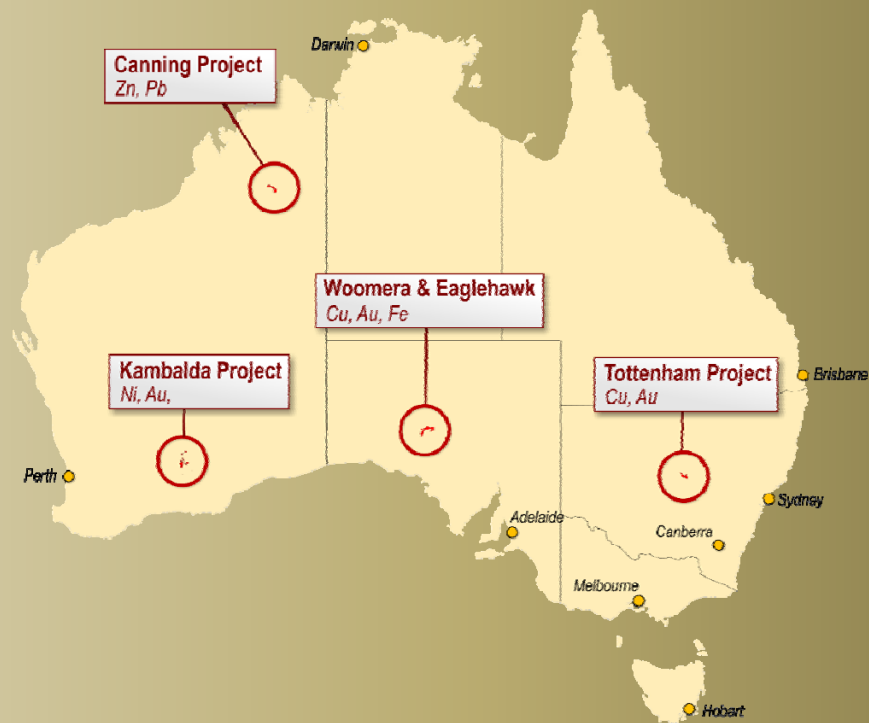




# Australia-Wide Exploration



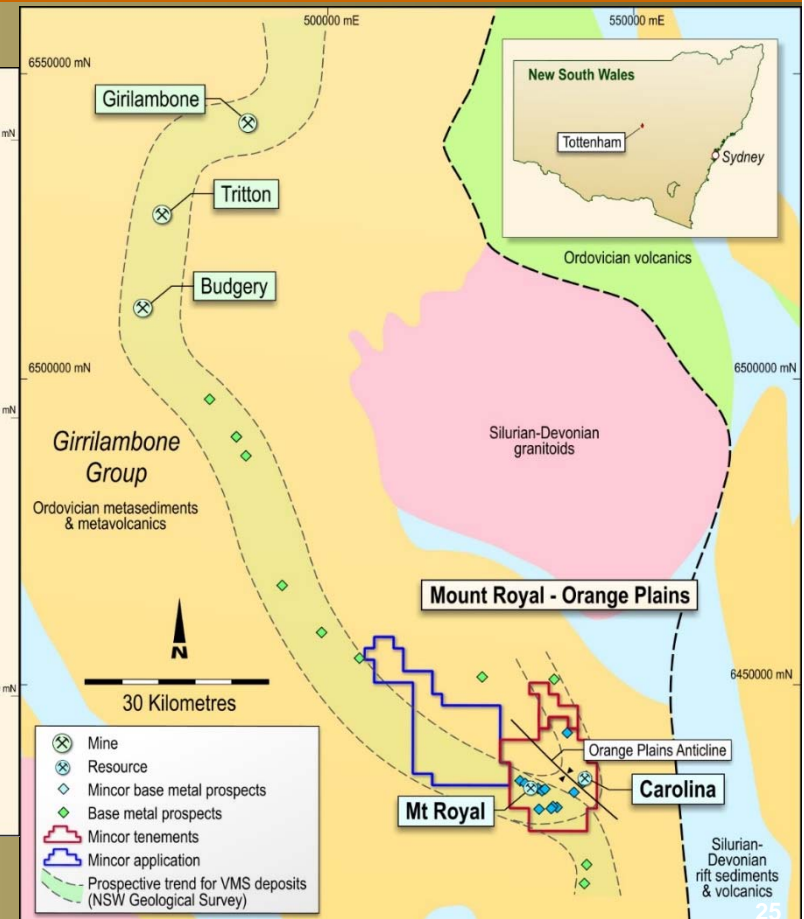
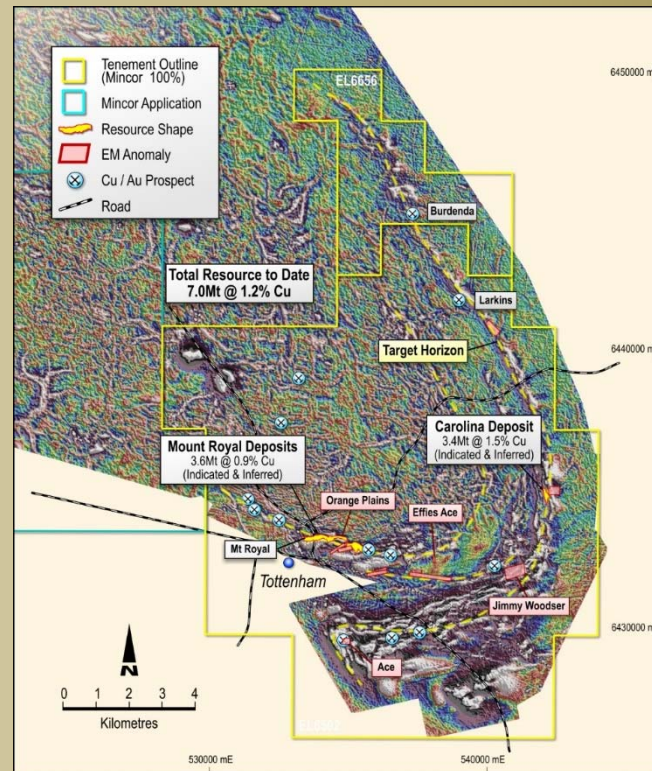
# Australia-Wide Exploration



# Tottenham Copper Project



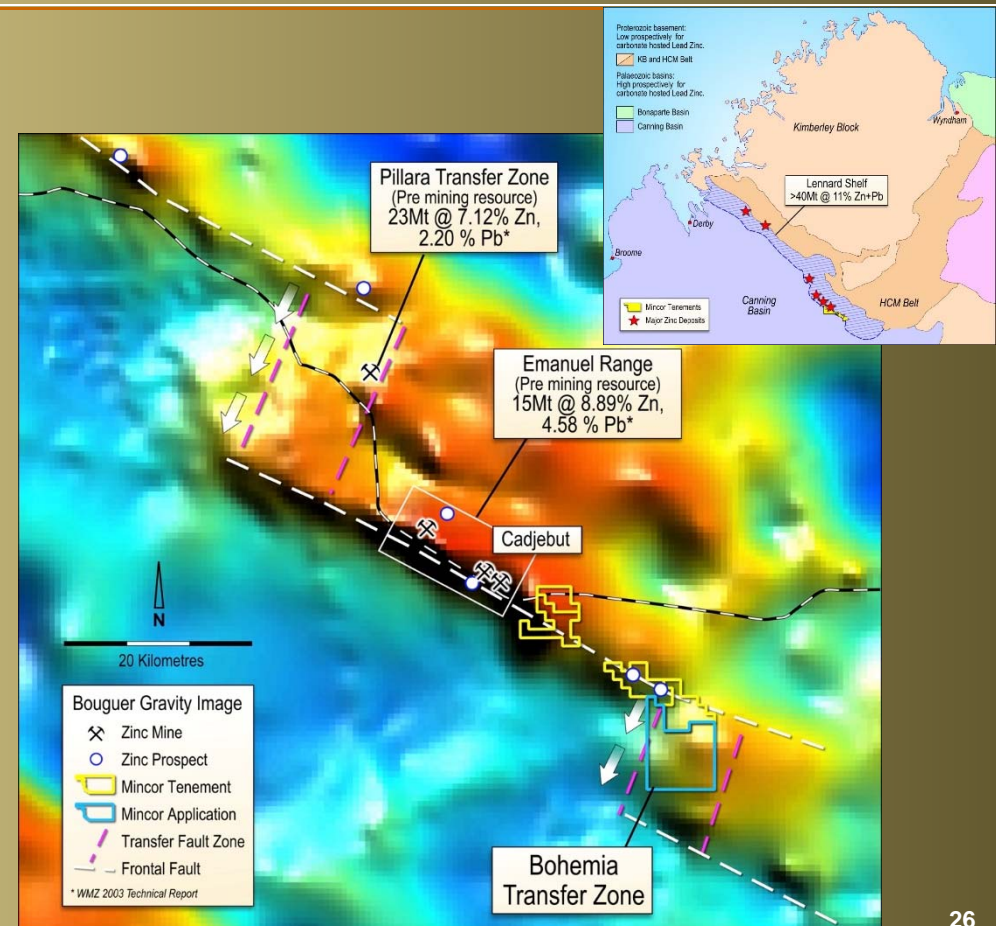
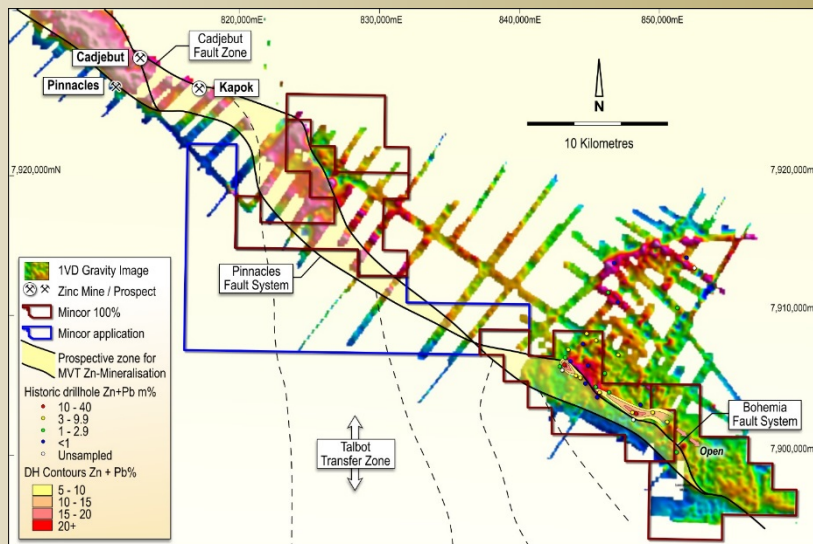
- Existing copper-gold resource:  
**6.9mt @ 1.2% Cu for 85,700 tonnes copper**
- Outstanding further exploration potential
- Established VMS trend
- All tenements 100% Mincor





# Bohemia Zinc Prospect

- High-quality conceptual zinc target in known mining district
- Gravity survey completed December Quarter 2014
- Detailed modelling and analysis underway



# Mincor Resources NL



- Active, long-standing, successful nickel mining Company
- Dominant exploration position in world class nickel district
- A rare Aussie Ni producer with organic growth opportunities
- Long history of dividend payments
- Very strong leverage to the nickel price

# Competent Persons Statement



## Tabulation of Nickel Mineral Resources as at 30 June 2014

RESOURCE	MEASURED		INDICATED		INFERRED		TOTAL		
	Tonnes	Ni (%)	Tonnes	Ni (%)	Tonnes	Ni (%)	Tonnes	Ni (%)	Ni Tonnes
Mariners	155,000	4.1	435,000	3.6	0	0.0	590,000	3.7	21,800
Redross	39,000	4.9	138,000	2.9	67,000	2.9	244,000	3.2	7,900
Burnett	0	0.0	141,000	4.5	99,000	2.7	240,000	3.7	9,000
Miitel	123,000	4.3	600,000	3.0	61,000	3.7	785,000	3.2	25,300
Wannaway	0	0.0	110,000	2.6	16,000	6.6	126,000	3.1	3,900
Carnilya*	40,000	3.8	40,000	2.2	0	0.0	80,000	3.0	2,400
Otter Juan	2,000	6.9	64,000	4.1	3,000	4.3	70,000	4.2	2,900
McMahon/Ken**	32,000	2.6	105,000	3.1	105,000	4.6	242,000	3.7	8,900
Durkin	0	0.0	376,000	5.1	26,000	3.6	402,000	5.0	20,000
Gellatly	0	0.0	29,000	3.4	0	0.0	29,000	3.4	1,000
Cameron	0	0.0	96,000	3.3	0	0.0	96,000	3.3	3,200
Stockwell	0	0.0	554,000	3.0	0	0.0	554,000	3.0	16,700
<b>GRAND TOTAL</b>	<b>391,000</b>	<b>4.1</b>	<b>2,689,000</b>	<b>3.5</b>	<b>378,000</b>	<b>3.7</b>	<b>3,458,000</b>	<b>3.6</b>	<b>123,000</b>

Figures have been rounded and hence may not add up exactly to the given totals.

Note that Resources are inclusive of Reserves.

\* Resources shown for Carnilya Hill are those attributable to Mincor - that is, 70% of the total Carnilya Hill Resource.

\*\* McMahon/Ken also includes Coronet.

Resources are estimated to a 1% nickel cut-off. No minimum mining width criteria are used. The Resource estimation is done using inverse distance or kriging methods, depending on the data density. Volume models are constructed using all available data including underground drive and stope mapping. Grade interpolation using assay results from diamond drill core and, in places, underground face samples.

The information in this report that relates to Mineral Resources is based on, and fairly represents, information and supporting documentation prepared by Mr Robert Hartley, who is a full-time employee of the Company and has sufficient experience relevant to the style of mineralisation and type of deposit under consideration, and to the activity that he is undertaking to qualify as a Competent Person as defined in the 2012 edition of the 'Australasian Code for Reporting of Exploration Results, Mineral Resources and Ore Reserves'. Mr Hartley approves the Mineral Resources statement as a whole and consents to the inclusion in this report of the matters based on his information in the form and context in which it appears, and is a Member of the AusIMM.

## Tabulation of Copper Mineral Resources (at a 0.4% copper cut-off)

LOCATION	INFERRED (tonnes)	GRADE (Cu %)	INDICATED (tonnes)	GRADE (Cu %)	TOTAL TONNES	GRADE (Cu %)	CONTAINED METAL (tonnes)
Mt Royal	418,600	0.9	3,183,700	0.9	3,602,300	0.9	33,860
Carolina	2,174,100	1.4	1,214,600	1.7	3,388,700	1.5	51,850
<b>Total</b>	<b>2,592,700</b>	<b>1.3</b>	<b>4,398,300</b>	<b>1.2</b>	<b>6,991,000</b>	<b>1.2</b>	<b>85,700</b>

**Note on Tottenham Mineral Resource Estimate:** Resources were estimated via ordinary kriging for copper and inverse distance for density. Sample composites were 1 metre down-hole and based on diamond drill core and reverse circulation chip samples. Total copper assays were available for all composites however density data was only available for the more recent Mincor samples. Geological modeling was aided by historical underground mine plans, however not all areas of historical stoping are well recorded, so depletion estimates, while reconcilable to recorded production, are not located accurately.



# Competent Persons Statement (cont'd)



## Tabulation of Ore Reserves as at 30 June 2014

RESERVE	PROVED		PROBABLE		TOTAL		
	Tonnes	Ni (%)	Tonnes	Ni (%)	Tonnes	Ni (%)	Ni Tonnes
Mariners	60,000	4.2	291,000	2.7	351,000	3.0	10,500
Redross	49,000	3.3	0	0.0	49,000	3.3	1,600
Miitel	54,000	2.9	381,000	2.4	434,000	2.5	10,800
Otter Juan	2,000	6.9	0	0.0	2,000	6.9	100
McMahon/Ken**	0	0.0	3,000	2.4	3,000	2.4	100
<b>GRAND TOTAL</b>	<b>164,000</b>	<b>3.5</b>	<b>674,000</b>	<b>2.6</b>	<b>838,000</b>	<b>2.7</b>	<b>23,000</b>

Appropriate dilution for the various mining methods was applied to the Indicated and Measured Resources. Using a 1.5% nickel cut-off and minimum mining width criteria, areas were selected as being mineable. Additional modifying factors to account for ore loss, recovery, further dilution, etc were then applied to achieve an estimated Reserve.

Figures have been rounded and hence may not add up exactly to the given totals.

\*McMahon/Ken includes Coronet.

The information in this report that relates to Ore Reserves is based on, and fairly represents, information and supporting documentation prepared by Mr Brett Fowler, who is a full-time employee of the Company and has sufficient experience relevant to the style of mineralisation and type of deposit under consideration, and to the activity which he is undertaking to qualify as a Competent Person as defined in the 2012 edition of the 'Australasian Code for Reporting of Exploration Results, Mineral Resources and Ore Reserves'. Mr Fowler approves the Ore Reserve statement as a whole and consents to the inclusion in this report of the matters based on his information in the form and context in which it appears, and is a Member of the AusIMM.

## Competent Persons Statement: Exploration Results

The information in this Public Report that relates to Exploration Results is based on information compiled by Messrs Robert Hartley, Richard Hatfield and Peter Muccilli, all of whom are Members of The Australasian Institute of Mining and Metallurgy. Messrs Hartley, Hatfield and Muccilli are permanent employees of Mincor Resources NL. Messrs Hartley, Hatfield and Muccilli have sufficient experience that is relevant to the style of mineralisation and type of deposit under consideration and to the activity that they are undertaking to qualify as Competent Persons as defined in the 2004 Edition of the Australasian Code for Reporting of Exploration Results, Mineral Resources and Ore Reserves. Messrs Hartley, Hatfield and Muccilli consent to the inclusion in the report of the matters based on their information in the form and context in which it appears.

Full details of these Resource and Reserve estimates are available in Mincor's ASX announcement dated 18 August 2014

# Competent Persons Statement (cont'd)



## Mineral Resource Estimates released 24 June 2015

Additional Resource estimates tabulated below were announced to the Australian Securities Exchange on 24 June 2015 and have yet to be incorporated into the Consolidated Resource Table above.

RESOURCE		MEASURED		INDICATED		INFERRED		TOTAL		
		Tonnes	Ni (%)	Tonnes	Ni (%)	Tonnes	Ni (%)	Tonnes	Ni (%)	Ni Tonnes
Durkin North	2015	-	-	417,000	5.3	10,000	3.8	427,000	5.2	22,400
	2014	-	-	376,000	5.1	26,000	3.6	402,000	5.0	20,000
Voyce	2015	-	-	50,000	5.3	14,000	5.0	64,000	5.2	3,400
	2014	-	-	-	-	-	-	-	-	-
Burnett	2015	-	-	241,000	4.0	-	-	241,000	4.0	9,700
	2014	-	-	141,000	4.8	99,000	2.7	240,000	3.7	9,000

Figures have been rounded and hence may not add up exactly to the given totals.

Note that Resources are inclusive of Reserves.

Please refer to Mincor's ASX Announcement dated 24 June 2015.

The information in this report that relates to Mineral Resources and Exploration Targets is based on, and fairly represents, information and supporting documentation prepared by Rob Hartley, who is a full-time employee of the company and has sufficient experience relevant to the style of mineralisation and type of deposit under consideration, and to the activity that he is undertaking to qualify as a Competent Person as defined in the 2012 Edition of the 'Australasian Code for Reporting of Exploration Results, Mineral Resources and Ore Reserves. Mr Hartley approves the Mineral Resources statement as a whole and consents to the inclusion in this report of the matters based on his information in the form and context in which it appears and is a Member of the AusIMM.



[www.mincor.com.au](http://www.mincor.com.au)